

## ScreenBeam 1100 Plus

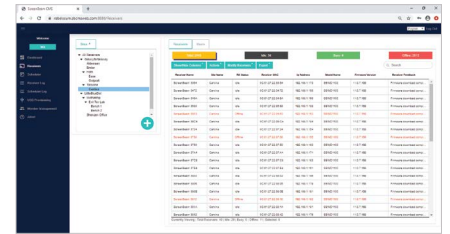
The most flexible enterprise wireless presentation and collaboration solution

ScreenBeam 1100 Plus is designed to help IT departments reduce costs and simplify conference room design. The only available app-free 4K wireless display solution to enable users on any device to easily share and markup content on in-room displays with support for Microsoft Windows Ink native in all Microsoft Office 365 applications, the productivity tool used by majority of organizations worldwide. With ScreenBeam Ghost Inking™ technology, wireless Windows Inking latency disappears for a more intuitive and natural pen-to-paper experience and a best-in-class wireless collaboration experience.

Presenter and guest devices have multiple ways to connect including Miracast™, local Wi-Fi mode, and network infrastructure connectivity. New HDMI input reduces conference room complexity and costs by eliminating unnecessary equipment while making it easy for older devices without wireless display capability to connect and display. Windows and macOS users can share content in both duplicate and extended screen modes and Multi-View allows up to four client devices to share content on-screen simultaneously.



CATALOG NUMBER  
**SBWD1100P**  
ScreenBeam 1100 Plus  
Wireless Display Receiver  
with ScreenBeam CMS



Every 1100 Plus receiver includes Central Management Enterprise software to monitor and manage ScreenBeam receivers using a standard web browser, and support multi-user and role-based access for large deployments with multiple sites and administrators.

[Learn More](#)

### Key Features

- ✓ Present from laptop, tablet or smartphone wirelessly
- ✓ Native screen mirroring solution; no app, no dongle
- ✓ Flexible in-room display sharing preference including HDMI input
- ✓ True extended desktop mode support
- ✓ Quick Switch Mode to switch between presenters without disconnecting
- ✓ Centrally monitor and manage receivers with multi-user and role-based access
- ✓ Windows 10 native wireless touch and inking
- ✓ Integrated HTML-based digital signage player
- ✓ Flexible multi-network for staff and guest presenters
- ✓ Multi-View allows up to four client devices to share content on-screen
- ✓ 4K and interactive touch panel ready
- ✓ Optional secured and isolated Wi-Fi hotspot

## Technical Specifications

### Compatible OS/Device

Miracast P2P wireless display requires certified device with either:

- Windows 10 build 1607 (and later) or Windows 8.1
- Android 4.2 (and later)

Wireless display over network requires device with either:

- Windows 10 build 1709 (and later)
- Windows 7 (and later)
- macOS 10.10 (and later)
- iOS 11 (and later)
- Chrome OS 74.0.3729.159 (and later)

### Language Support

English, Simplified Chinese, Traditional Chinese, Japanese, French, German, Dutch, Korean, Spanish, Italian, and Russian

### Hardware Specifications

Video	H.264 compression		
Audio	LPCM 2.0		
Resolution <sup>1</sup>	Up to 4K@30Hz		
Ethernet	10/100/1000-BASE-T RJ-45 LAN		
Wireless	<b>Miracast and Local Wi-Fi Mode:</b> 802.11ac dual-band 3x3 MIMO <b>Network Bridge:</b> 802.11ac dual-band 2x2 MIMO		
Authentication	WPA-PSK (TKIP)		
Protocol	WPA2-PSK (AES), PEAP-MSCHAP V2, EAP-TLS		
Interfaces	1 x HDMI Input	1 x HDMI Output	
	2 x USB 2.0 Host Type-A	1 x USB 3.0 Host Type-A	
	1 x Analog 3.5mm audio Output	1 x DC Power Jack	
Content Protection <sup>2</sup>	HDCP 2.x		
Power	<b>Input:</b> 12VDC, 3A   <b>Consumption:</b> 8.4W (typical), 36W (peak)		
Dimensions	8.66 x 5.66 x 1.47 inch (220 x 144 x 37.5 millimeter)		
Temperature	<b>Operating:</b> 0° – 40° C (32° – 104° F), <b>Storage:</b> -20° – 85° C (-4° – 185° F)		
Humidity	<b>Operating:</b> 20 – 80% non-condensing, <b>Storage:</b> 10 – 90% non-condensing		

### Regulatory and Compliance

Approved: FCC and UL

Pending: CE, RoHS and C-Tick

### Warranty

Limited one year manufacturer hardware

1. Actual display resolution and quality depend on the wireless/network environment

2. Content protection is not available for macOS/iOS

## Industry Leader

ScreenBeam Inc., a leading wireless display and collaboration provider, delivers an app-free screen sharing experience on any modern device to bring intuitive wireless collaboration into any meeting space or classroom. ScreenBeam is Microsoft's co-engineering partner for wireless display enabling wireless Office 365 experiences.

ScreenBeam solutions are used as the validation platform for wireless display functionality by companies like Microsoft and leading PC OEM and device companies. Headquartered in Santa Clara, CA, ScreenBeam has offices across the United States, Europe and Asia.

[screenbeam.com](https://screenbeam.com)

© 2020 All rights reserved. ScreenBeam and the ScreenBeam logo are registered trademarks owned by ScreenBeam Inc. All other names are properties of their respective owners. Specifications subject to change without notice. 050720-v4



**ScreenBeam®**