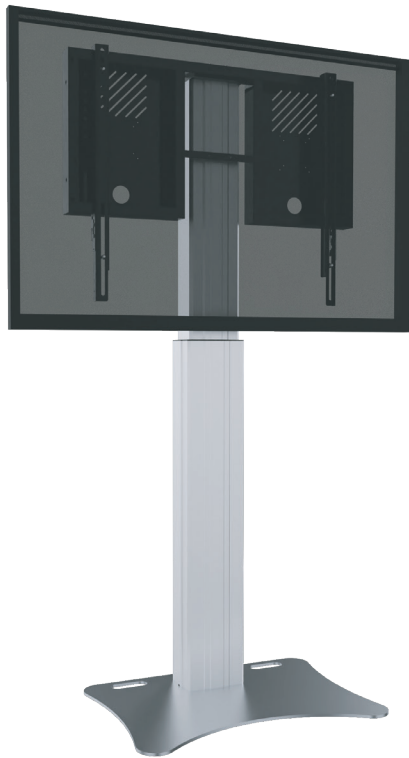


HEIGHT ADJUSTABLE DISPLAY AND MONITOR STAND, LITE SERIES WITH 70 CM OF VERTICAL TRAVEL
COLUMN SILVER, ANTI-COLLISION, FLOOR PLATE AND U-SHAPED BRACKET



PRODUCT

Adjustable display & monitor stand for 42"-86" touch screen monitors with Floor plate and U-shaped bracket.

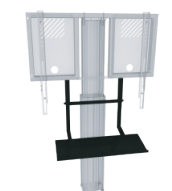
The RLI10070PK-VS monitor stand is designed for touch screen monitors up to 86". The units feature a sturdy monitor mount with integrated cable management, "pull & release" locking brackets for quick and easy mounting of the monitor and the WMB-SCETS wall mount bracket, the ideal addition for stability and support.

The RLI10070PK-VS monitor stand comes with a slim column that offers 70 cm of vertical travel.

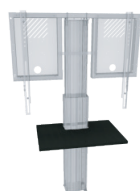
A 0.3" thick, solid steel plate secures to the motorized center column. Designed for static, freestanding applications or to add stability to wall mount systems, secured to e.g. a stud wall. The floor plate features cutouts/ handles for easy transportation. It comes powder coated in grey aluminum.

The unit comes flat-packed in 4 cartons and is courier-shippable.

Accessories



Keyboard shelf for LITE series



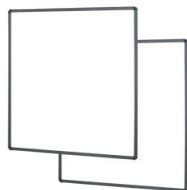
Front shelf for LIGHT system



Laptop side shelf



Universal PC bracket



Two whiteboard side wings



Video conference camera top shelf LITE series for displays from 65 - 86 inch

FEATURES

- > Heavy duty mount for touch screen monitors up to 86"
- > "Pull & release" brackets for easy mounting of the monitor
- > VESA pattern, max. 800 x 600
- > Integrated cable management
- > 70 cm of smooth motorized height adjustment, actuator 1500N, 47 mm/ 1.85" per second
- > Floor plate and a U-Shaped wall mounting bracket for extra stability
- > With anti-collision function
- > Quick and easy mounting to the wall
- > Wired remote control included



Display mount



Wall mounted



Motorized height adjustable



Single display



5 years warranty



Max. load
136 kg / 299.8 lbs

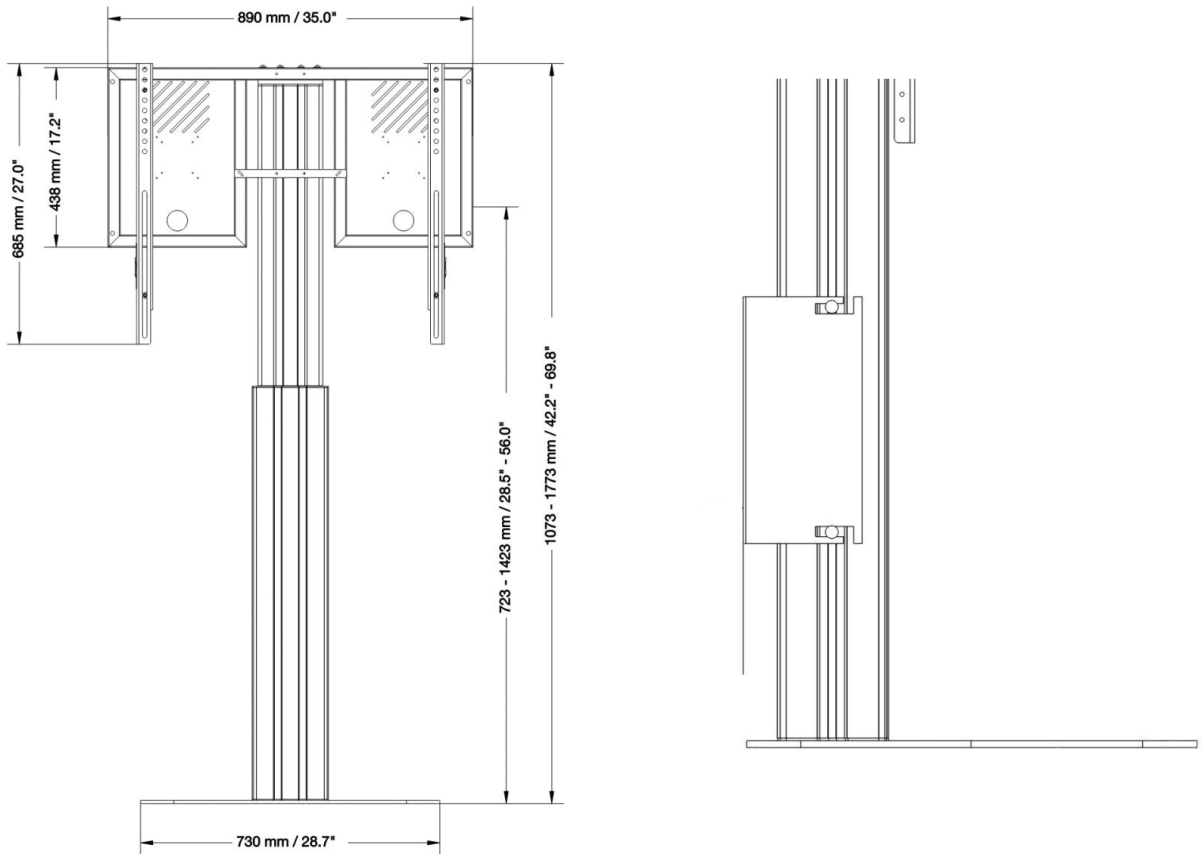


Max. Vesa
800 x 600

Item number	RLI10070PK-VS	
Vesa horizontal / Vesa vertical	300 mm - 800 mm / 200 mm - 600 mm	
Frame for all	42" - 86"	
Center to floor distance	723 mm - 1423 mm	28.5" - 56"
Load capacity	136 kg	299.8 lbs
Width / Height / Depth	890 mm / 1073 mm - 1773 mm / 530 mm	35" / 42.2" - 69.8" / 20.9"
Weight	42 kg	92.6 lbs
Warranty	5 years limited warranty	
Frame color	RAL 9005 deep black	
Column color	Silver anodized	
Base color	RAL 9006 white aluminum	
Packages	Package dimensions WxHxD	Package weight
AFSCETARLI	895 x 65 x 485 mm / 35.2 x 2.6 x 19.1"	14 kg / 30.9 lbs
CCEL10070WK	1190 x 195 x 245 mm / 46.9 x 7.7 x 9.6"	23,3 kg / 51.4 lbs
PST-SCETA	750 x 20 x 600 mm / 29.5 x 0.8 x 23.6"	21,8 kg / 48.1 lbs
WMB-SCETS		

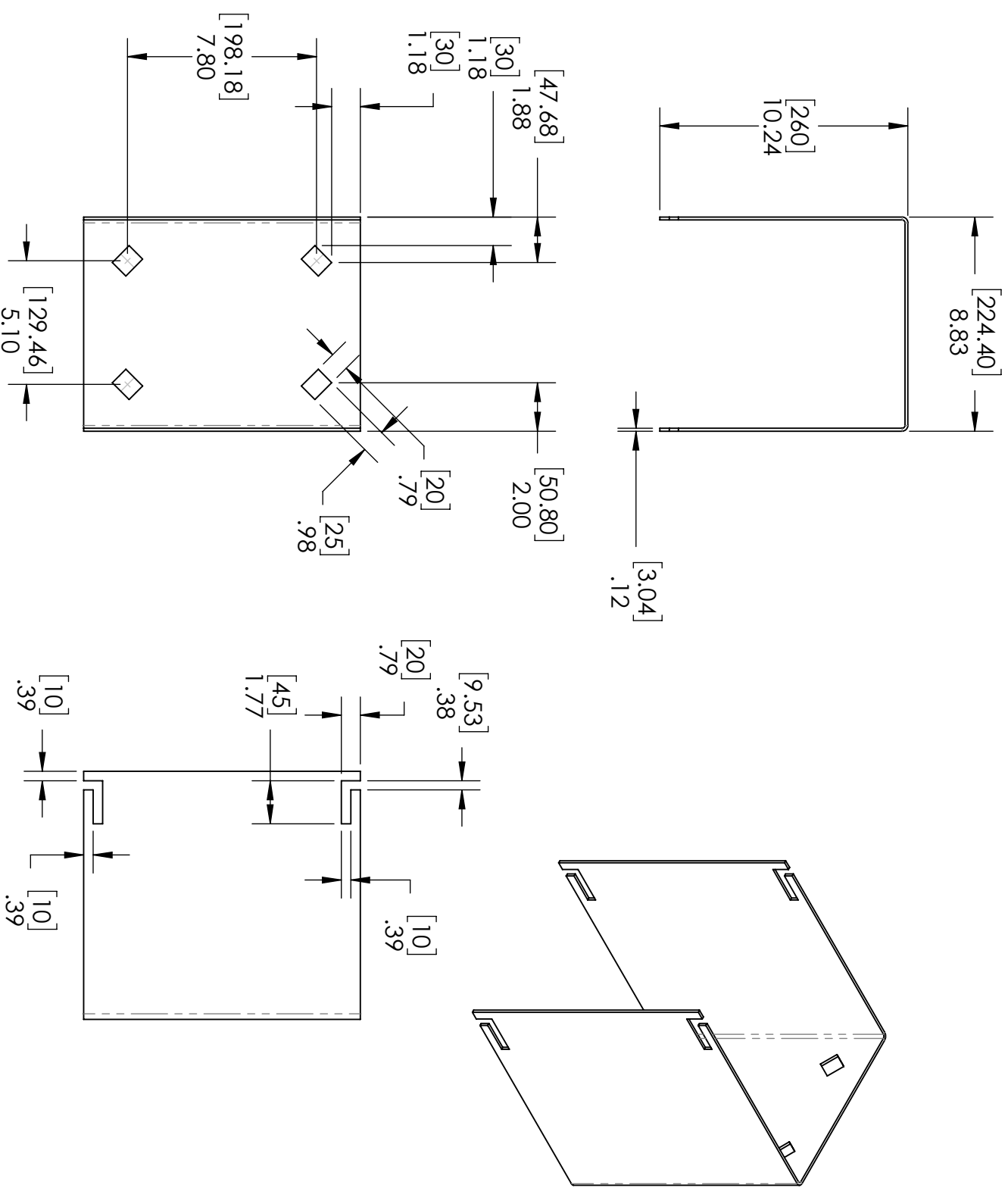
DIMENSIONS

in mm / inch



MANUFACTURER:

CONEN Produkte GmbH
 Conenstr. 4
 54497 Morbach-Gonzerath
 Germany



- NOTES:**
1. MATERIAL: HR A1011 P&O
 2. PAINT: RAL 9006
 3. REMOVE ALL BURRS AND BREAK ALL SHARP EDGES UNLESS OTHERWISE SPECIFIED.

UNLESS OTHERWISE SPECIFIED DIMENSIONS ARE IN INCHES		CUSTOMER		TITLE	
TOLERANCES:				U SHAPE BRACKET	
FRACTIONAL ± 1/16				SIZE/PART NUMBER	
ANGULAR ± 1 DEG				B	
TWO PLACE DECIMAL ± 0.03				WMB-SCETS	
THREE PLACE DECIMAL ± 0.010				WEIGHT 10.98 lbs	
MATERIAL HR A1011 P&O		CUSTOMER PART NUMBER		SHEET 1 OF 1	
GAUGE/THICKNESS 11 GA					
SHEET FINISH -					
DO NOT SCALE DRAWING		DRAWN BY		REV -	
		CHECKED BY			
		DATE 8/18/2017			

PROPRIETARY AND CONFIDENTIAL
 THE INFORMATION CONTAINED IN THIS
 DRAWING & CUT FILES ASSOCIATED WITH
 THIS DRAWING IS THE SOLE PROPERTY OF
 SMUCKER LASER CUTTING & METAL
 FABRICATION. ANY REPRODUCTION IN PART
 OR AS A WHOLE WITHOUT THE WRITTEN
 PERMISSION OF SMUCKER LASER CUTTING &
 METAL FABRICATION IS PROHIBITED.